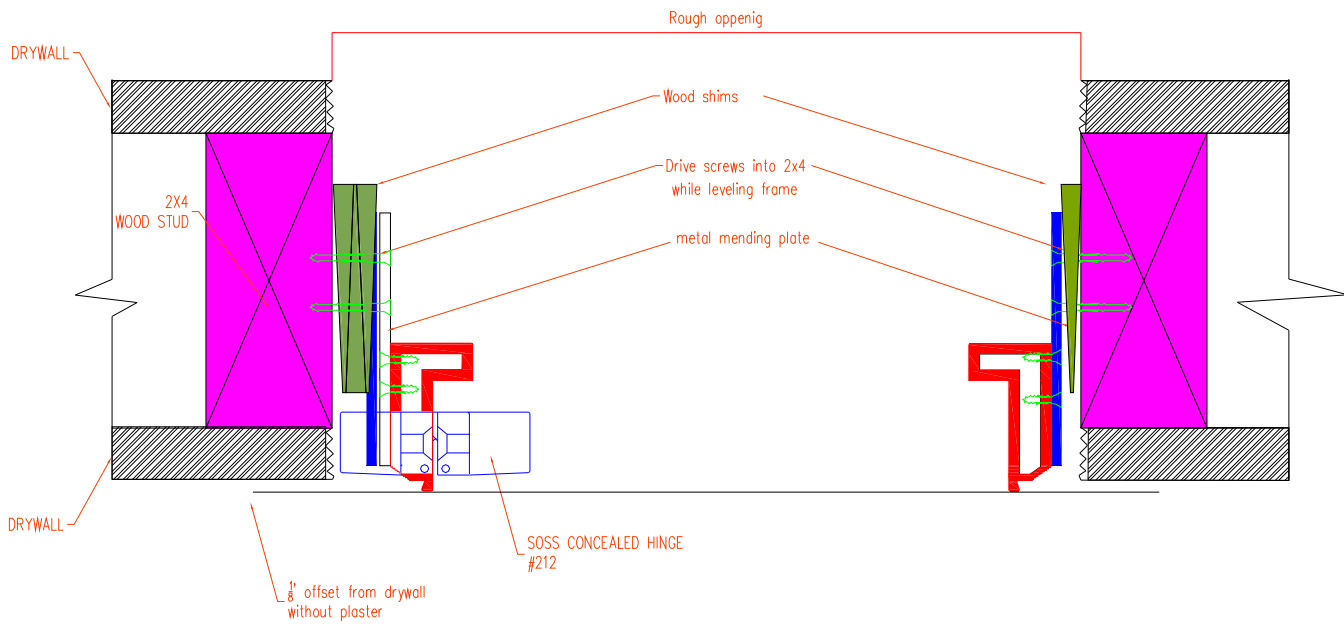


STEP 1

Attach "SOSS" hinges to aluminium frame using supplied screws.
 Attach aluminium frame to 2x4 using supplied mending plates in at least 8 places
 (3 per side and 2 on top) Always start on hinge side. Use wood shims, wood blocks or combination
 in between aluminium frame and 2x4 to level de frame. Make sure the frame is perfectly level and 1/8"
 offset from drywall edge. Use 4' level or longer.

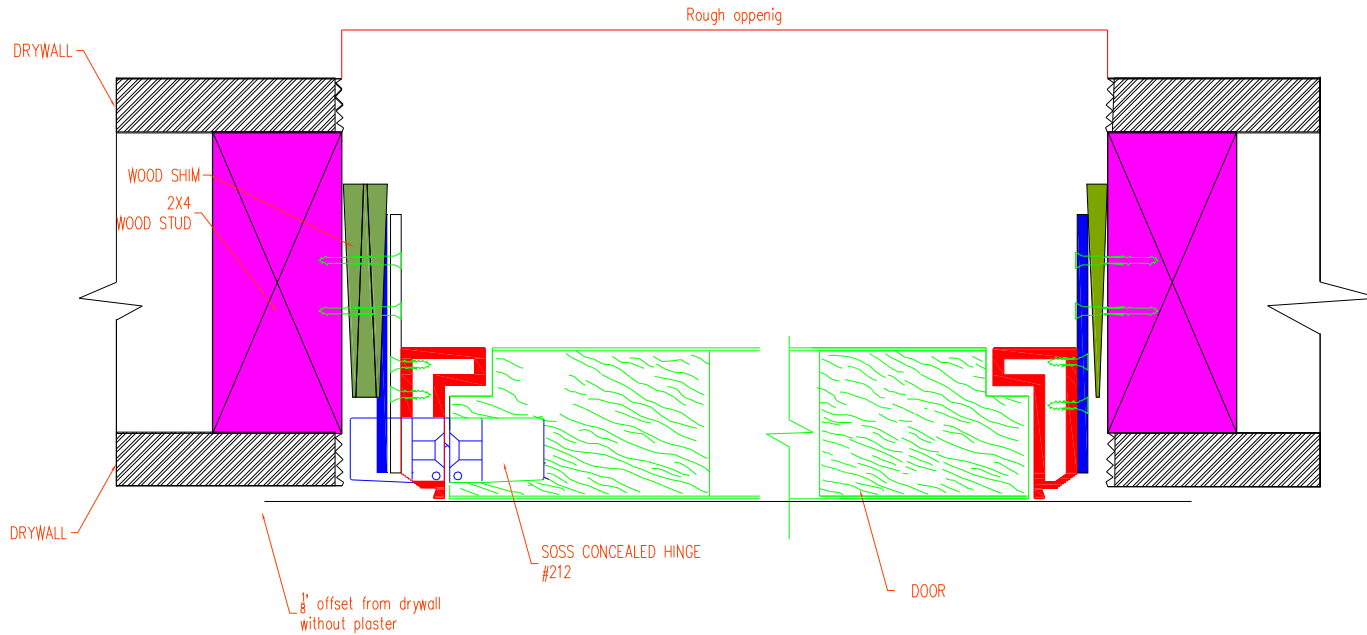


LINEA DOOR
INSTALLATION INSTRUCTIONS

CHANGES		REMARKS	BY	APPROVED	DATE	NAME:
SYM	#					
REFERENCE: LINEA CONCEALED DOOR - FOR PULL APPLICATION						
MATERIAL: ALUMINIUM			TOLERANCES: +/- 0.5mm		DATE: 3/10/08	
DRAWN BY: JCC			APPROVED BY: LM		SHEET NUMBER: H.2	
DATE: 3/6/08			SCALE: 1 : 4			
MODERNDOORSDIRECT.COM 180 NE 39TH ST, SUITE 222 MIAMI, FL 33137 Phone: 305-576-6224 THIS DRAWING REMAINS PROPERTY OF MODERNDOORSDIRECT.COM						

STEP 2

Attach hinges to door and check if door opens and shuts correctly. Take this opportunity to make sure gaps between aluminium frame and door are equal on all sides and top. You can still adjust as requires.

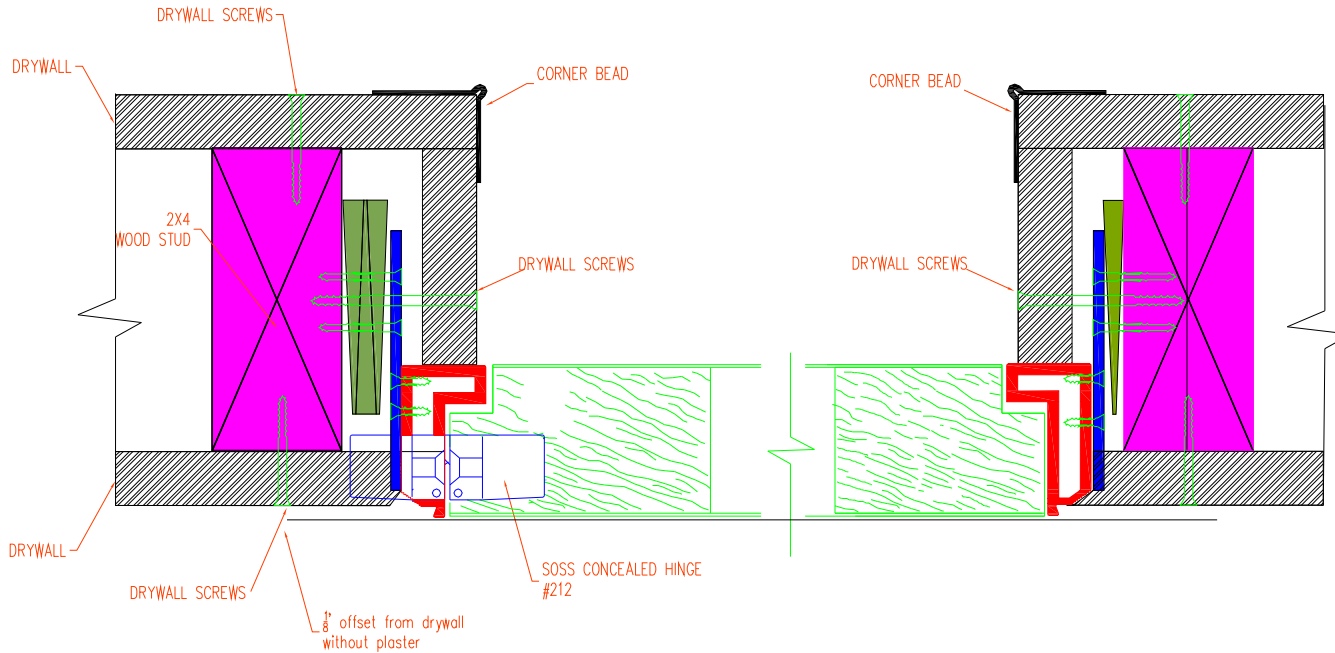


LINEA DOOR
INSTALLATION INSTRUCTIONS

CHANGES		REMARKS	BY	APPROVED DATE	NAME:	LINEA CONCEALED DOOR - FOR PULL APPLICATION				
SYM	#					REFERENCE:	MATERIAL:	TOLERANCES:	APPROVED BY:	DATE:
						ALUMINIUM	± 0.5mm	LM	3/10/08	H.2
MODERNDOORSDIRECT.COM 180 NE 39TH ST. SUITE 222 MIAMI, FL 33137 Phone: 305-576-6224 THIS DRAWING REMAINS PROPERTY OF MODERNDOORSDIRECT.COM						DRAWN BY: JCQ	DATE: 3/6/08	APPROVED BY: LM	DATE: 3/10/08	SHEET NUMBER: 1 : 4

STEP 3

Depending on desire frame detail attach 1/2" or 1/4" drywall. The thinner the drywall the more exposed aluminium frame. Corner beads should also be attached at this point.



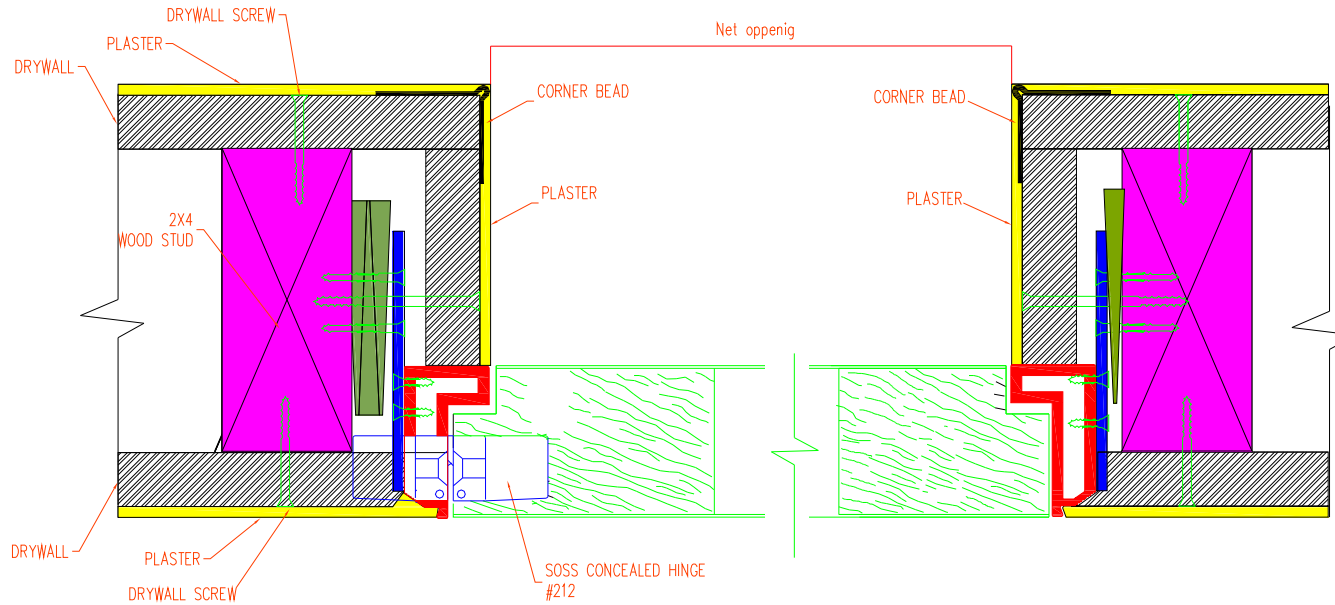
LINEA DOOR
INSTALLATION INSTRUCTIONS

CHANGES	REMARKS	BY	APPROVED DATE	NAME:
SYM #				REFERENCE:
LINEA CONCEALED DOOR - FOR PULL APPLICATION				
		TOLERANCES:		ALUMINUM
		DATE:		DATE:
		DRAWN BY:		APPROVED BY:
		JM		LM
		DATE:		DATE:
		3/6/08		3/10/08
		SCALE:		SHEET NUMBER:
		1 : 4		H.2

MODERNDOORSDIRECT.COM
 180 NE 39TH ST. SUITE 222
 MIAMI, FL 33137
 Phone: 305-576-6224
 THIS DRAWING REMAINS PROPERTY OF
 MODERNDOORSDIRECT.COM

STEP 4

Fill in gaps between aluminium frame and original drywall with "Durobond 20" plaster. Make sure hinges and aluminium frame are covered with 3M blue masking tape, specially if it going to be exposed.
 Finish specially if it going to be exposed. Finish wall as you do any other wall.



LINEA DOOR
 INSTALLATION INSTRUCTIONS

CHANGES	REMARKS	BY	APPROVED DATE	NAME:
SYM #				
REFERENCE:				
MATERIAL: LINEA CONCEALED DOOR - FOR PULL APPLICATION				
TOLERANCES: +/- 0.5mm				
DRAWN BY: JQC		DATE: 3/6/08		DATE: 3/10/08
APPROVED BY: LM		SHEET NUMBER: 1 : 4		H.2
MODERNDOORSDIRECT.COM 180 NE 39TH ST. SUITE 222 MIAMI, FL 33137 Phone: 305-576-6224 THIS DRAWING REMAINS PROPERTY OF MODERNDOORSDIRECT.COM				