

MODERNDOORSDIRECT

SPECIFICATION SHEET

For 9 years, **Moderndoorsdirect** has been a reliable manufacturer of quality pre-hung, flush-to-the-wall interior doors. The manufacturing procedures used today are state-of-the-art. We provide the most accurately constructed, durable product possible, including frames made of marine quality 6065-T3 aluminum.

Suitable for only interior use, our doors are constructed by highly qualified, experienced craftsmen who give individualized attention to every detail of the design. We offer not only a primed finish but also the finest quality materials in a wide choice of wood veneers species including: Cherry, Mahogany, European oak, Zebra, Teak, and Wenge among many others. Although there are more than 12 standard sizes from which to choose, our design flexibility provides almost unlimited custom capabilities in any finish and any size up to 48" wide X 120" high. Including double doors. Especially suited for high-end residential and commercial uses, our doors are specified by the most prestigious architectural and design firms.

1. Doors

- a. Doors shall be manufactured by Moderndoorsdirect. 180 N. E. 39th St suite 222, Miami, FI 33137. www.Moderndoorsdirect.com email : info@moderndoorsdirect.com Tel 305 576 6224, Fax 305 573 9025
- b. Doors shall be free of defects, warp and buckle and manufactured with solid laminated MDF for superior strength and stability.
- c. Doors Standard thickness shall be 1 3/4" and made of solid core.
- d. Doors shall be prepared at factory to receive hinges. Locksets shall be installed by contractor.
- e. 12 standard sizes offered .Custom sizes available upon request.
- f. State-of-the-art CNC technology, tooling software and allows for exceptional quality in machined surfaces.
- g. Doors shall be fitted with wood blocks during production for superior fastening holding capability for hardware and hinges
- h. Doors are sold as complete units ready to install.

2. Frames

- a. Frames shall be made of quality 6065-T3 aluminum. Finishes available: Mill (to be painted over), Anodized and brushed (to be exposed)
- b. The head and the jambs shall have a mitered joint with supplied angle bracket and self tapping screws. All contact edges closed and tight.
- c. Frame shall be mortised, drilled for SOSS 212 hinges
- d. Provide mending plates and self tapping screws to attach jams and head to stud.
- e. Provide CNC scribing of lockset standard American strike plate into aluminum frame

3. Hinges

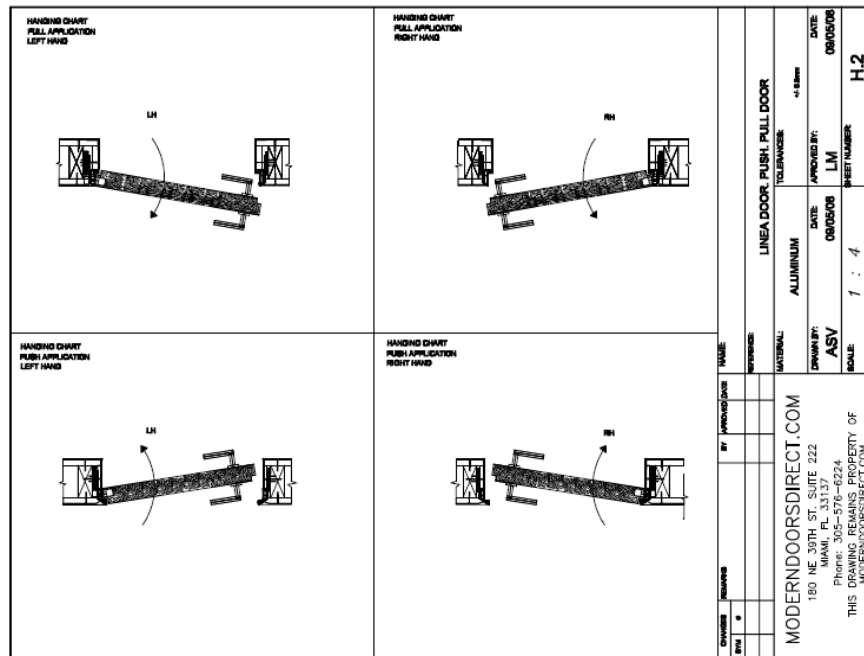
- a. Hinge shall be completely mortised in door and jamb such that hinge is concealed when door is closed; SOSS Invisible Hinges as manufactured by Universal Industrial Products Company.
- b. Shall be constructed with interpolated, laminated links connected with non-removable, riveted pins which provide moving pivot points and allow 180 degrees opening.
- c. Shall be made of high strength, plated steel and heavy duty, zinc alloy castings, or 300 series stainless steel and 300 series stainless steel castings.
- d. Finish available: Stain chrome,(ANSI No. 682) Polished chrome, (ANSI No. 681)
- e.

4. **Installation.**

- a. Install doors as per manufactures installation instructions. Can be obtained at www.moderndoorsdirect.com
- b. Install quantity of hinges as recommended by manufacturer for specific application.
- c. Locate hinges as recommended by manufacturer and indicated on approved shop drawings.
- d. Fit doors accurately in frames within standard industry clearances for specific applications.
- e. Thoroughly clean, polish, and protect hinge with masking tape finish until painting, plastering and other work is completed

5. **Ordering requirements.**

- a. Door size
 - i. Widths: 2'0", 2'6", 2'8", 3'0"
 - ii. Heights: 6'8", 7'0", 8'0"
 - iii. For custom sizes consult manufacture.
- b. Aluminum frame finish
 - i. Mills
 - ii. Anodized
 - iii. Brushed
- c. Push or pull (see drawing)
- d. Left or Right opening (see drawing)



6. **Shipment**

Most door orders can be shipped directly to the job site for the convenience of the installer. FOB. Miami FI

7. **Warranty**

- a. 1 year limited warranty on all doors, providing they are properly handled, installed and cared for